

# BPC20 trunk battery connector

## Brief introduction

- Crimping termination
- Enterprise standard: Q/21E1660



## Application

The product is push-pull in-line connector without locking function which is achieved by the locking mechanism between equipments. This series is used in the current transmission between battery box and vehicle side, battery wire and charging side.

## Operating environment

The product is applied in vibration environment in EV driving process.

## Main technical characteristics

### [Mechanical]

- Shell: PBT, flame retardant rating: UL94-V0
- Insulator: PBT, flame retardant rating: UL94-V0
- Contact: copper alloy, gold plating
- Vibration: 10~500Hz
- Endurance: 10000 cycles

### [Environmental]

- Operating temperature: -40°C ~ +80°C
- Salt spray: 240 hours

### [Electrical]

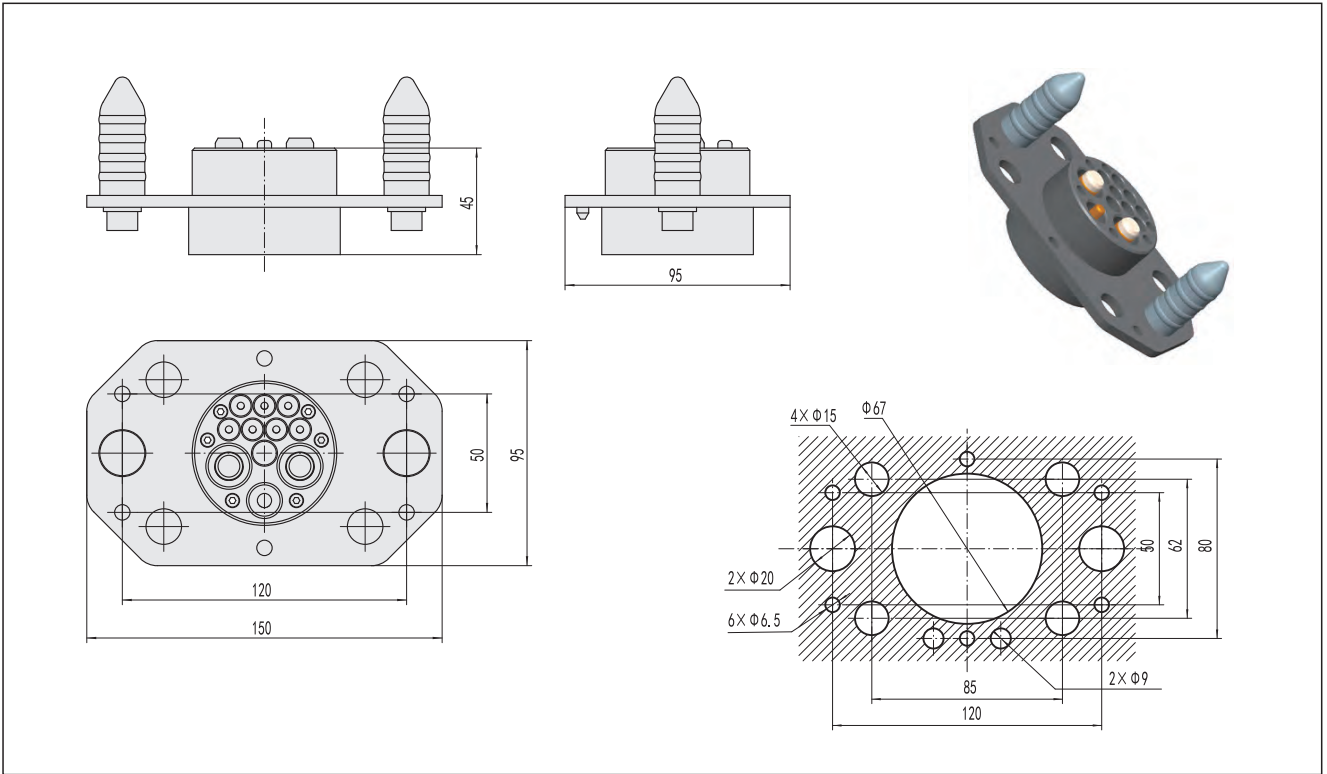
- Rating current:  
Signal 2A, auxiliary 20A, power 200A, grounding 80A
- Contact resistance:  
Signal and auxiliary  $\leq 0.75 \text{ m}\Omega$ , power and grounding  $\leq 0.5 \text{ m}\Omega$
- Insulation resistance:  
 $\geq 100 \text{ M}\Omega$  (normal temperature, after wiring)
- Withstanding voltage:  
between power and grounding 3000V AC  
Between signal cavities: 500VAC

## Ordering information

Basic series	BPC	20	-S-	200A	/	750V
Connector type	20					
Contact type	S=socket P=pin					
Rating current	200A					
Separator	/					
Rating voltage	750V					

## Outline dimensions

[BPC20-P-200A/750V (plug) ]



[BPC20-S-200A/750V (receptacle) ]

